



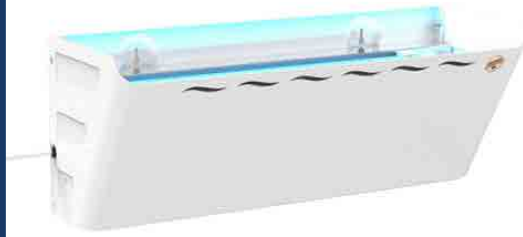
**CLEANING SERVICES**  
**PEST CONTROL SERVICES**  
**PEST CONTROL PRODUCTS**

 **81 111 157**  
 **aplusglobalgroup**  
 **aplusglobalgroup**  
 **info@aplusglobalgroup.com**

**[www.aplusglobalgroup.com](http://www.aplusglobalgroup.com)**

# Electric Fly Trap / Decorative

## FLY TRAP EFT-DE-201



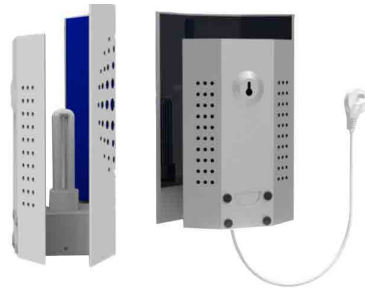
- High Efficacy Shatterproof Philips'ST8 UV Tubes\*2
- 110v-220V 60HZ 30W
- Tube life:8000hours
- High Quality glue board \*1 white color or custom-made
- size:425\*245mm
- Coverge :120m2
- Material :Steel
- Size 48\*22.5\*18cm"

## FLY TRAP EFT-DE-101



- Housing material: Strong and durable ABS
- Coverage: 60-80m2
- Tubes: UVA tubes
- Brand of tubes: FSL, top 1 manufacturer in China
- Working time: 8000-10000 hours
- Philips tubes: Available (Cost increased for philips tubes)
- Wall mounted: Yes
- Shaterproof: NO
- Waterproof: NO
- Application place: Ideal for restaurant, library, hotel, kitchen etc.
- Tubes: 1X18W
- Glue Board size 27.5X16CM"

## FLY TRAP EFT-DE-202



- Housing Material: 0.8mm Gal Iron Sheet (Powder Coated)
- Coverage: 30-50m<sup>2</sup>
- Tube:E27 20Watt 365nm UV Bulb
- Size:22.5\*12.6\*30cm
- Bulb: 1x 20Watts 365nm H type Bulb
- Bulb life: 6000hours
- Power: AC110V/220V 50/60HZ
- Machine Dimension: 22.5x12.6x30cm
- Front Glue Board Dimension: 240x240x0.5(mm)
- Back Glue Board: 200x180x0.5(mm)
- Machine Net Weight: 1.5kg
- Installation: Wall-mounted
- Application place: Ideal for use in restaurants, hotels, bars or retail shops."

## FLY TRAP EFT-DE-102



- Housing material: Strong metal with color painting
- Coverage: 60-80m2
- Tubes: UVA tubes
- Brand of tubes: FSL, top 1 manufacturer in China
- Working time: 8000-10000 hours
- Philips tubes: Available (Cost increased for philips tubes)
- Wall mounted: Yes
- Shaterproof: NO
- Waterproof: NO
- Application place: Ideal for restaurant. library, hotel. kitchen etc.
- Tubes: 1X18W
- Glue Board size 24.6X30CM"

## FLY TRAP EFT-DE-103



- Housing material: Strong metal with color painting
- Coverage: 60-80m2
- Tubes: UVA tubes
- Brand of tubes: FSL, top 1 manufacturer in China
- Working time: 8000-10000 hours
- Philips tubes: Available (Cost increased for philips tubes)
- Wall mounted: Yes
- Shaterproof: NO
- Waterproof: NO
- Application place: Ideal for restaurant. library, hotel. kitchen etc.
- Tubes: 1X18W
- Glue Board size 24.6X30CM"

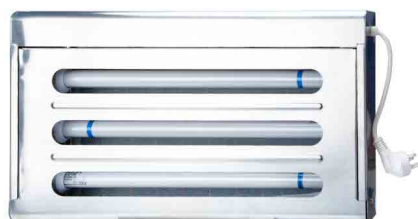
# Electric Fly Trap / One-sided

## FLY TRAP EFT-OS-104



- Housing material: Strong metal with color painting
- Coverage: 100m2
- Tubes: UVA tubes
- Brand of tubes: Philips tube
- Working time: 8000-10000 hours
- Philips tubes: Available (Cost increased for philips tubes)
- Wall mounted: Yes
- Hanging: Yes
- Shaterproof: Available
- Waterproof: NO
- Double safety lock: Yes
- Application place: Ideal for restaurant, library, hotel. kitchen etc.
- Tubes: 2X15W FSL tube 2X15W Philips tube
- Glue Board size 46\*30.9CM 46\*30.9CM

## FLY TRAP EFT-OS-203



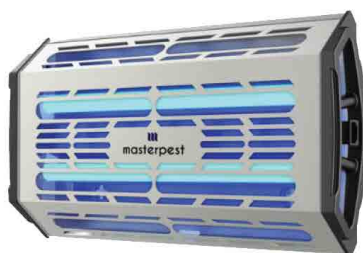
- High Efficacy Shatterproof Philips'S T8 UV Tubes\*3
- Tube life:8000hours
- 110v-220V 60HZ 45W
- High Quality glue board \* 1white collor or custom-made
- size:425\*245mm
- Coverge :135m<sup>3</sup>
- Material :Steel 304
- Size 53\*7.5\*31cm
- Waterproof grade IP65"

## FLY TRAP EFT-OS-105



- Housing material: Metal with color painting
- Coverage: 100m2/150m2
- Tubes: 2 XT8 15W
- Brand of tubes: PHILIPS TUBE
- Working time: 8000 hours
- Wall mounted: Yes
- Shaterproof: Available
- Waterproof: NO
- Application place: Ideal for restaurant, library, hotel, kitchen etc
- Double safety lock: Yes
- Tubes: 2X15W FSL tube 2X15W Philips tube
- Glue Board size: 43X38CM 43X38CM

## FLY TRAP EFT-OS-106



- Housing material: Strong and durable metal
- Coverage: 100m2
- Tubes: 2XT8 15W
- Brand of tubes: Philips TUBE
- Working time: 8000-10000 hours
- Philips tubes: Available (Cost increased for philips tubes)
- Wall mounted: Yes
- Shaterproof: Available
- Waterproof: NO
- Application place: Ideal for restaurant, library, hotel, kitchen etc
- Tubes: 2X15W FSL tube 2X15W Philips tube
- Glue Board size 42.5\*24.5CM 42.5\*24.5CM

## FLY TRAP EFT-OS-107



- SModel NO. SWG-308
- Housing material: Strong and durable metal housing
- Coverage: 100m2
- Tubes: 2XT8 15W tube
- Brand of tubes: PHILIPS TUBE
- Working time: 8000 hours
- Wall mounted: Yes, hardware included.
- Shaterproof: Available
- Waterproof: NO
- Application place: Ideal for restaurant, library, hotel, kitchen etc.
- Tubes: 2X15W FSL tube 2X15W Philips tube
- Glue Board size 42.5\*24.5CM 42.5\*24.5CM"

# Electric Fly Trap / Double-sided

## FLY TRAP EFT-DS-204



- High Efficacy Shatterproof Philips'S T8 UV Tubes\*4  
Tube life:8000hours
- 110v-220V 60HZ 30W
- High Quality glue board \* 2white collar or custom-made  
size:425\*245mm
- Coverge :900m<sup>3</sup>
- Material :Steel
- Size 49\*13\*31cm"

## FLY TRAP EFT-DS-205



- High Efficacy Shatterproof Philips'S T8 UV Tubes\*4  
Tube life:8000hours
- 110v-220V 60HZ 30W
- High Quality glue board \* 2white collar or custom-made  
size:425\*245mm
- Coverge :900m<sup>3</sup>
- Material :Steel
- Size 49\*13\*31cm"

# Fly Trap / Bait

## FLY TRAP



**FT-BG-206**

•Size 9.7\*20.5cm



**FT-BG-207**

•Size 20\*20\*30cm

## FLY BAIT



**FB-BS-208**

•Size 16.5\*10\*5.5cm

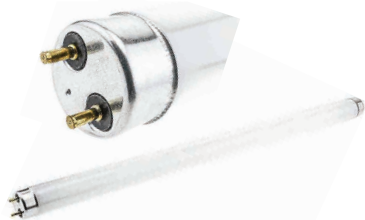
# Spare Parts

## GLUE BOARDS



GP-1020	GLUE PAPER EFT-DE-101
GP-1021	GLUE PAPER EFT-DE-102
GP-1022	GLUE PAPER EFT-OS-104/105/107
GB-1018	GLUE BOARD 14.5x36.5
GB-1019	GLUE BOARD 31.5x42.5

## TUBE LAMPS



TL-1011	FSL T5 8W UV TUBE
TL-1012	FSL T8 10W UV TUBE
TL-1013	FSL T8 10W UV TUBE, SHATTERPROOF
TL-1014	T8 15W FSL UV TUBE SHATTERPROOF WITH BLUE STICKER
TL-1015	T8 15W TUBE PHILIPS 45CM WITH SHATTERPROOF WITH BLUE STICKER
TL-1016	FSL T8 20W TUBE, SHATTERPROOF
TL-1017	T8 20W TUBE PHILIPS WITH SHATTERPROOF WITH BLUE STICKER

## UV LAMP



UL-1010	T4 E27 3U 18W FSL ENERGY SAVING UV LAMP
---------	---

## STARTERS



ST-1008	STARTERS PHILIPS
ST-1009	STARTER